

STANDARDIZATION OF SWARNA BHASMA PREPARED IN THREE DIFFERENT METHODS THROUGH NAMBORI PHASE SPOT TEST (NPST)

¹M.Gopikrishna,

²M.Pallavi

¹Professor and HOD, ²Asst.Professor Dept of Rasashastra and Bhaishajya Kalpana, SJGAMC,Koppal

ABSTRACT

Swarna has been used in therapeutics since ages. In *Samhita* when *bhasmikarana* was not properly explained and established they used to heat and quench in milk and used for *pumsavana*. After the establishment of *Ayurvedia Rasashastra*, various and genuine methods of *shodhana* and *Marana* were explained. *Swarna bhasma* so prepared will be in the nano form and gives more effect disease conditions and less quantity used. *Ayurveda acharyas* have mentioned various methods of *bhasmikarana*. In the present study Nambori Phase Spot Test is used as an analytical method to standardize *swarna bhasma* prepared by three different methods.

Keywords: *Swarna, swarna bhasma, Nambori Phase Spot Test.*

INTRODUCTION: *Rasashastra*, the Indian Alchemy deals with standard herbo-mineral preparation which have be tested in every step for its genuinity. The main objective of these formulations or individual *bhasmas* is to give better health to the individual. A very popular quote from our *rasa granthas* states that –

Loha (any *dhatu- Swarnadi*) when made into *bhasma*¹ (nano form), its potency increases and drug absorbtion and assimilation also gets increased². Since the *samhita kaala swarna* is been used in therapeutics, for example In muscular dystrophy⁴, *rasayana, pumsavana karma*⁵, *swarna bindu prashana*, etc. It is considered as best *rasayana* and also helpful in nullifying the spread of *visha*.

As it is been used in various forms and is widely used in various diseases and a large number of formulations, it is the need of

the hour to check and confirm its genuinity.

Namburi phased spot test was introduced in 1970 by Dr. Namburi Hanumantha Rao for the analysis of coded *Sindoora* and *Bhasma*. The main aim behind commencing this innovative method is the identification of *Bhasmas* and *Sinuduras* by their specific names as known in Ayurveda by virtue of their quality difference and not by their chemical names alone.

This technique is based on the principles of liquid chromatography, which helps for the differential identification of each *Bhasma* from the other *Bhasmas* having same element as the main constituent.

AIM & OBJECTIVES:

1. To analyze *swarna bhasma* by NPST.

MATERIALS & METHOD:

Three different *bhasmikarana* procedures were adopted

Sample 1:

<i>Sh swarna</i>	<i>12 karsha</i>
<i>Sh parada</i>	<i>12 karsha</i>
<i>Sh hingula</i>	<i>12 karsha</i>
<i>Sh gandhaka</i>	<i>12 karsha</i>
<i>Sh manashila</i>	<i>12 karsha</i>
<i>Sh navasadara</i>	<i>12 karsha</i>
<i>Nimbu swarasa</i>	<i>Q.S</i>

Method of preparation: *Sh swarna & Sh parada* are triturated with *nimbu swarasa* & made into an amalgam. This is washed and then other ingredients are added .

Finally it is again triturated with *nimbu swarasa* and then *laghuputa* is given. This process is repeated for 8-10times⁶.

Sample 2:

<i>Sh swarna patra</i>	12 karsha
<i>Sh parada</i>	12 karsha
<i>Sh manashila</i>	12 karsha
<i>Rasasindoora</i>	12 karsha
<i>Swarna makshika bhasma</i>	1 shana (3g)
<i>Nimbu swarasa</i>	Q.S

Method of preparation: *Sh swarna & Sh parada* are triturated with *nimbu swarasa* & made into an amalgam. This is washed and then *manashila, rasasindoora* and *swarna makshika bhasma* are added.

Finally it is again triturated with *nimbu swarasa* and then *laghuputa* is given. From second puta *swarana makshika bhasma* should be excluded . Total of 8-10putas were given⁷.

Sample 3:

<i>Sh swarna patra</i>	12 karsha
<i>Sh parada</i>	12 karsha
<i>Sh gandhaka</i>	12 karsha
<i>Nimbu swarasa</i>	Q.S

Method of preparation: *Sh swarna & Sh parada* are triturated with *nimbu swarasa* & made into an amalgam. This is washed and then *gandhaka* is added. Fine kajjali is prepared. Finally it is again triturated with *nimbu swarasa* and then puta is given. From second puta only *gandhaka* is added . total of 14putas were given⁸. These prepared *swarna bhasma* were procured and the analysis was carried out.

to settle down for 48 hours shaking vigorously at frequent intervals. A drop of this suppressant solution should be carefully put with the help of dropper on the impregnated whatman paper. As the drop comes in contact with the paper an instantaneous characteristic spot begins to develop and changes with the time. The change of colours and the pattern of the spot at 3 different phases at 3 different time intervals i.e., 0 minutes, 5 minutes 20 minutes are to be recorded.

NAMBURI PHASE SPOT TEST⁹:

Procedure: Whatman paper No.1 should be impregnated with 10% potassium iodide, 10% potassium bromide, potassium ferrocynide and haridra paper seperately and dried carefully on a clean glass sheet. About 0.25 gm of 3 samples of *swarna bhasma* should be taken in a test tube and aquaragia is added. The solution is allowed

RESULTS:

Observations were done for 4phases-

- 1st phase- immediately after putting of the drop
- 2nd phase- after 5minutes
- 3rd phase- after 20minutes
- 4th phase-after 1hour.

The following table will show the changes seen during each phase: Sample 1:

Sl.No	Paper name	Inference
1	Potassium bromide	Periphery : Orange ring circle Centre : fading orange –yellow

2	Potassium ferrocynide	Periphery : Dark brown circle Centre: White ring formed in first 2 phases disappeared. centre faded
3	Potassium iodide	Periphery : dark yellow Centre : light yellow
4	Haridra paper	Periphery : Brown ring Centre : Faded brown

Sample 2:

Sl.No	Paper name	Inference
1	Potassium bromide	Periphery : Orange ring outer Centre : Orange ring inner & few spots
2	Potassium ferrocynide	Periphery : Dark brown circle Centre : white patches with some spots
3	Potassium iodide	Periphery : light blue uneven ring Centre : dark blue
4	Haridra paper	Periphery : Brown ring Centre : fading brown

Sample 3:

Sl.No	Paper name	Inference
1	Potassium bromide	Periphery : dark Orange ring Centre : light orange
2	Potassium ferrocynide	Periphery : Dark brown circle Centre : faded brown
3	Potassium iodide	Periphery & Centre : orange spot
4	Haridra paper	Periphery : dark brown Centre :light brown

DISCUSSION:

Swarna bhasma was prepared by following the marana procedures explained respectively. First and second sample showed bhasma siddhi lakshanas in 10putas and third sample was completed after 14th puta.

In Namburi Phased Spot test sensitivity of reactions at different time intervals is measured unlike the chromatography of chemistry.

The continual chemical reactions taking place gradually between 2 chemical substances on static media at fraction of second are easily detected by their distinct colour changes the pattern of spot which is specific to each rasa formulation, as the standard.

In the 1st and 3rd samples the spots in each paper was almost same confirming the presence of swarna but 3rd sample was more intense. 2nd sample showed blue spots showing the presence of copper and

iron (swarna makshika bhasma). It can be inferred that all the three samples has the presence of swarna .As the ingredient of preparation differs,the color spots also differed. NPST is a very basic analytical procedure that can be performed in department with very less equipments but this gives a genuine information about ingredients in the formulation and bhasmas.

CONCLUSION:

From the above discussion it can be concluded that sample 1 & 3 were prepared with rasabhasma and that was confirmed with orange border and white faded ring on potassium bromide paper. In the second sample showed blue inner ring and faded outer ring depicting the presence of copper and iron (swarnamakshika bhasma) in it.

NPST is the very basic analysis for standardization which is feasible as well as can be done with basic lab equipments. So

by the results given by the test we can conclude that sample 3 contains more percentage of *swarna* compared to the other two. To confirm this further XRD, XRF studies can be carried out and exact percentage can be noted.

REFERENCES:

1. Vagbhata Rasa Ratna Samucchya, vol 1, commented by D.A . Kulkarni, chapter 5 verse no.39,1,21
2. Vagbhata Rasa Ratna Samucchya, vol 1, commented by D.A . Kulkarni, chapter 5, verse no. 39,1,21
3. Agnivesha. charaka samhita. hindi vyakshya. 8th edition. Varanasi:Choukambha Sanskrit samsthan; 2004, shareera sthana, 8th chapter, 19verse.
4. Sharma sadanand ,Rasa Tarangini, 11th edition chapter 15, verse no. 49-52
5. Sharma sadanand ,Rasa Tarangini, 11th edition chapter 15, verse no. 53-58

6. Sharma sadanand ,Rasa Tarangini, 11th edition chapter 15, verse no. 59-61

7. Dr. Namburi Hanumanth Rao, Manual of Namburi phased Spot test, Vijayawada, Namburi Inventions & Publications, May 1997, 10pp.

Corresponding Author:

Dr.M.Pallavi, Asst. Professor Dept of Rasashastra and Bhaishajya Kalpana, SJGAMC, Koppal
Email: drpallavimulimani@gmail.com

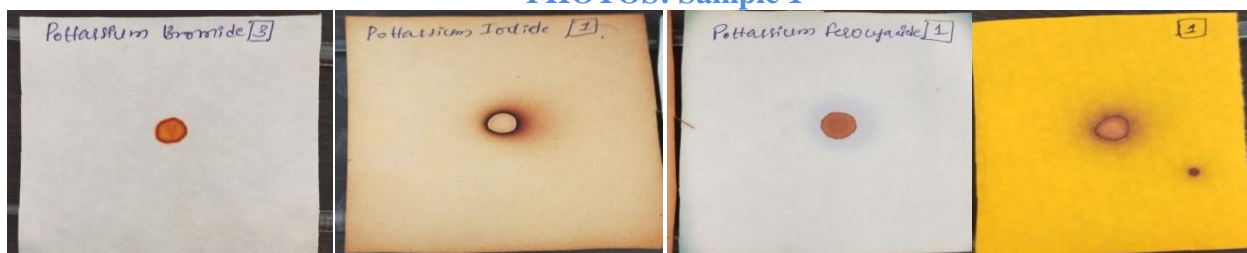
Source of support: Nil

Conflict of interest: None

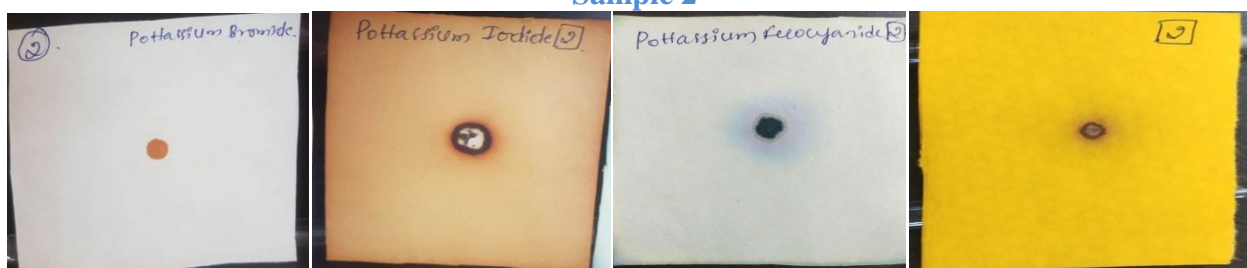
Declared

Cite this Article as : [M.Gopikrishna et al: Standardization of Swarna Bhasma Prepared in Three Different Methods Through Namburi Phase Spot Test (Npst)] www.ijaar.in : IJAAR VOLUME III ISSUE XI NOV -DEC 2018 Page No:1669-1672

PHOTOS: Sample 1



Sample 2



Sample 3

