



**ANATOMICAL ELABORATION OF GAVINI SHARIR  
(ATHARVAVEDA) WITH SPECIAL REFERENCE TO ADHOGAMI  
MUTRAVAHIDHAMANI**

<sup>1</sup>Thakur Pritamsing Chandansing, <sup>2</sup>Shrikrishna Bhagwat Sachin, <sup>3</sup>Jape Ravindra Ramdas,  
<sup>4</sup>Humne Sankalp Ramrao, <sup>5</sup>Kharat Ravindra Sahebrao

<sup>1</sup>Assistant Professor Aspm's Ayurved Medical College, Hospital & Research Institute,  
Buldana-443001

<sup>2</sup>Associate Professor Csmss Ayurved Mahavidyalaya, Kanchanwadi Aurangabad 431001

<sup>3</sup>Professor Csmss Ayurved Mahavidyalaya, Kanchanwadi Aurangabad 431001

<sup>4</sup>Assistant Professor Dr Vijay Ayurved Mahavidyalaya, Kaithi, Varanasi  
Country : India

<sup>5</sup>Associate Professor Csmss Ayurved Mahavidyalaya, Kanchanwadi Aurangabad 431001

**ABSTRACT :**

The *Ayurvedic* Literature on *Adhogami Dhamanis* is compiled and studied. The exact division of *Dhamani* and detail study of *Adhogat Dhamanis* which are present in Abdomen is done. Out of them the two *Mutravahi Dhamanis* are described with all references. Then the *Gavini Sharir* is elaborated with its main reference from *Atharvaveda* and all commentaries compiled together to elaborate *Gavini*. All the opinions regarding their meaning, grammar in the *paribhasha* of *Shloka* to get the exact meaning are discussed. To go practically for the Anatomy cadaveric dissections were done and the observations were noted, these observations are suggestive about the mixed up use of *Dhamani* word everywhere and the word is used for particular structure regarding the present topic. And the same is used at another place with a different meaning. Sometimes it was considered as artery, vein, lymphatic and sometimes even for the vessels attached to the viscera. To study the above points in depth, the histological study was also done and it also revealed that similarities are more than the differences in artery and Ureter.

The *Sharir* told in *Atharvaveda* has been elaborated by *Sushruta* by his own practical approach. But the *Gavini Sharir* in *Atharvaveda* is not explained further by *Sushruta*. He had written about *Adhogami Mutravahi Dhamani* but didn't use the word *Gavini*. There are still many confusions and dilemma about many things. This diversity should be united to make a certain conclusion. This study is to compile and analyze *Gavini* and *Adhogami Mutravahi Dhamanis* to evaluate these two are different or one and the same.

**Key words:** *Gavini sharir, Atharvaveda, Adhogami mutravahi dhamani*

**INTRODUCTION:** Knowledge of human body is the very first step in the world of medical science. "*Sharir*" means human body and "*Rachana*" means structure. So *Sharir Rachana* is the branch of *Ayurveda* which states a detailed description of the structures in human body. *Acharya Sushruta* made evolution in this science by conducting practical cadaveric dissections

and had detail study of *Sharir Rachana* in that ancient time without any high definition instruments. The *Sharir* told in *Atharvaveda* has been elaborated by *Sushruta* by his own practical approach. But the *Gavini Sharir* in *Atharvaveda* is not explained further by *Sushruta*. He had written about *Adhogami Mutravahi Dhamani* but didn't used word *Gavini*. The

vessels which make urine to flow and get collected into urinary bladder are told by Bruhatrayee, but not by the name Gavini. There is confusion and dilemma about the concept of Gavini. This diversity should be united to make certain conclusion. This confusion and dilemma inspired for the exploration of Gavini Sharir. To elaborate Gavini Sharir compilation and analysis of Gavini and Adhogami Mutravahi Dhamanis done to evaluate these two are different or one and the same.

### AIM AND OBJECTIVES

**Aim:** Detail anatomical study of Gavini Sharir with special reference to Adhogami Mutravahi Dhamani.

### Objectives:

- 1) Detail study of Dhamani Sharir through Ayurvedic literature.
- 2) Collection of literature or reference of Gavini in Atharvaveda, Bruhatrayee,

Laghutrayee with all commentaries, Modern science texts, so as to explore Gavini Sharir.

- 3) Comparative study of Mutravahi Dhamani and Gavini.

### REVIEW OF AYURVEDIC LITERATURE

#### Dhamani Sharir

#### Dhamani Vyutpatti

- Dhaman -Blowing.
- Dhamani -A reed pipe.<sup>[1]</sup>
- Shira (Stri.) Dhamanyam
- Kaviraj Gangadhar Roy said 'Dhaman' is 'hollowness', 'sravana', the Passage of flow and 'sarana' the movement.

#### Dhamani Pravibhaag, Sankhya

All Acharyas noted branching of Dhamanis and their Pravibhaag with counts of them. Here are the references collected to show and understand these Vibhaag and counts.

Sr. no.	Samhita	Total Dhamani Sankhya	Divisions
1	Atharvaveda <sup>[2]</sup>	1000	-
2	Charaka <sup>[3]</sup>	10	200 → 29956
3	Sharangdhar <sup>[8]</sup>	24	-
4	Sushruta <sup>[6]</sup>	24	Urdhva Adhah Tiryak 10 10 4
5	Ashtanga Hridaya <sup>[7]</sup>	24	Urdhva Adhah Tiryak 10 10 4
6	Bhel <sup>[4]</sup>	10	Urdhva Adhah Tiryak 4 4 2
7	Kashyapa <sup>[5]</sup>	10	Urdhva Adhah Tiryak 4 4 2

**Chart to show the Total Dhamani Sankhya described in Ayurvedic literature:**

### GAVINI VICHAR

**Vyutapatti:** It is the word meaning or given to the Kikad named animal which lives in burrow. It is also pronounced as Javina<sup>[9]</sup>.

**Gavini Sharir :** The main and first of all references about Gavini comes from Atharvaveda Pratham Kanda- Pratham

Anuvaak- Trutiya Sukta- Shashthi as follows<sup>[1]</sup>

This reference is regarding Niruddha Mutra (Retention of Urine) Chikitsa. It says because of the disease the Mutra got collected in abdominal Nadis/ vessels, Mutra filled in Gavinis and the Mutra

filled up in *Mutrabasti*, that your whole *Mutra* should come out making *Baal* sound. *Sayanacharya* commented on *Atharvaveda Sukta* as, inside the *aantra* in *Udara* which *Mutra* is collected in diseased condition comes out at time...

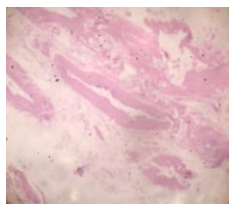
Retention of *Mutra* in *Gavinis*. Absorbed from *Aantra* the *Mutra*'s vector or medium to come in *Mutrashaya* is two laterally situated *Nadis*/ vessels and are called as *Gavini*.

Here *Gavinis* are *Mutravahi Strotas* which makes flow of urine produced in *Vrukkas* doubtlessly.<sup>[1]</sup>

*Dalhan* explored the complete digestion process in between *Aamashaya* and *Pakvashaya*, the *Toya (Jaliyansha)* in *Aaaharasya Annabhaava* i.e. *Saar bhaaga* absorbed in *Pakvaashaya* is future *Mutra*'s *Kaaran* produced after digestion of food and separated from it, that *Dravamaya* (liquid) *Udaka* is conveyed by or flowed by two *Naadis*. That *Udaka* after coming into *Basti* known as *Mutra*, that *Mutra* is poured by the *naadis* which are adjoined or connected to *Mutrabasti*. *Haaranchandra* commented as there are two channels doing *Mutravahan* coming from *Vrukkas*.<sup>[6]</sup>

**Gaviniau-** Ureters: *Gananath Sen* in his *Pratyaksha Sharir* Preface commented on *Mutrabasti* coming two *Mutravahi Dhamanis* are clearly Indicating *Gavinis*. Though here *Mutravahi* are *Gavinis*, *Shishnastha* (Penile) *Mutramarga* is *Mutrapraseka*<sup>[9]</sup>.

## OBSERVATIONS



T.S. of Gonadal artery

*Gavinis*= Ureters And *Mutra nirmitt* in *Vrukka* is poured in *Gavinis*, this *Mutrasya* channels to come in *Mutrashaya* are *Gavinis*.

*Mutravahi* are *Strota/ Marga* coming from *Vrukka*, these two *Strota* are called as *Gavini*<sup>[9]</sup>.

**MATERIALS:** *Bruhatrayee, Laghutrayee, Ayurvedic samhitas*, Reference Books, Journals, Texts, Available Modern Science books of Anatomy. Models, charts, diagrams, atlas, O.H.P. slides, pubmed, Previous researches, published documents.

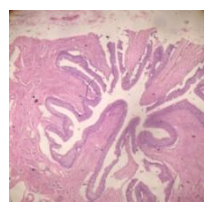
Human Cadaver for dissection. Instruments for Dissection.

**METHODS:** The Study was conducted at CSMSS Ayurved Mahavidyalaya, Kanchanwadi, Aurangabad, Maharashtra.

## 1. DISSECTION OF HUMAN CADAVER PERFORMED IN DISSECTION HALL

## 2. COLLECTION OF SAMPLE FOR HISTOLOGICAL STUDY

1. Piece of Ureter cut from the cadaver and collected in a sterile bulb containing Formalin.
2. Piece of Gonadal artery taken in another bulb containing Formalin.
3. The collected samples then brought to the Histopathology laboratory for their Transverse Sectional study for similarities and differences microscopically.



T.S. of Ureter

(For comparison Gonadal artery considered as it lies side by side to the Ureter).

**Similarities in an Artery and Ureter.**<sup>[10][11][12][13][14]</sup>

	<b>Gonadal Artery</b>	<b>Ureter</b>
<b>Shape</b>	Long Tubular	Long Tubular
<b>Colour</b>	Pinkish white	Pinkish white
<b>Texture</b>	Vascular	Vascular
<b>Position/ Course</b>	In between Aamashaya(stomach) and Pakvashaya (sigmoid colon)	In between Aamashaya(stomach) and Pakvashaya (sigmoid colon)
<b>Histology</b>	Lumen round when filled	Lumen round when filled
	3 layers	3 layers
	Inner longitudinal and Outer circular fibres of middle muscular layer	Inner longitudinal and Outer circular fibres of middle muscular layer
<b>Physiology</b>	Peristaltic movement	Peristaltic movement
<b>Nerve supply</b>	Sympathetic trunk T <sub>10</sub> Filaments of Spermatic Plexus derived from Renal plexus	Sympathetic trunk T <sub>10</sub> – L <sub>1</sub> Parasympathetic trunk S <sub>2</sub> – S <sub>4</sub>
<b>Embryological development</b>	Mesodermal in origin	Mesodermal in origin

**Differences in an Artery and Ureter**<sup>[10][11][12][13][14]</sup>

	<b>Gonadal Artery</b>	<b>Ureter</b>
<b>Content</b>	Carries Blood	Carries Urine
<b>Branching</b>	Further branching is there	No further branching
<b>Histology</b>	Lumen is flat/ oval when empty	Lumen is star shaped when empty
	Innermost endothelial lining	Innermost transitional epithelial lining

At the time of dissection of cadaver the observations are noted as follows:<sup>[10][11][12][13][14]</sup>

- From the renal pelvis, the Ureters come out and travel downwards behind the peritoneum. When traced down they enter the Urinary bladder.
- Along with the ureters there are different vessels coming down such as, Abdominal aorta, Superior mesentric artery z, Inferior mesentric artery, Gonadal arteries, Internal and external iliac arteries etc.
- But only two, the Ureters gets inserted into posterior inferior aspect of Urinary bladder obliquely.
- Pelvis of Ureter starts just below the greater curvature of Stomach in a Transverse plane antero-posteriorly. And they enter the urinary bladder inferiorly sigmoid colon and in front of rectum.
- The colour of ureters seems just similar to the arteries present just side by side to them.
- Texture of ureter and arteries are same while felt between two fingers.
- The Ureters look like a medium sized artery.

**CONCLUSION:** The *Gavinis* told in *Atharvaveda* are the two Ureters which flows urine to the Urinary bladder. *The Adhogami Mutravahi two Dhamanis* told

by Sushruta are the Two Ureters only. The *Gavinis* and *Adhogami Mutravahi Dhamanis* are one and the same i.e. Ureters. The *Mutravaha* word should be considered as *Gavini* (Ureters) to understand Ayurvedic *Sharir Rachana Siddhant*, Physiology, *Vyadhi Samprapti* and *Chikitsa paddhati*. These conclusions hopefully will be helpful to understand Ayurvediya *Mutrotpatti Siddhant* and the Disease *Samprapti of Mutravaha Strotas* to decide the perfect treatment in the same for the Clinicians and Ayurveda Scholars.

#### REFERENCES:

1. Sanskrit Marathi Shabdakosha, Janardan Vinayak Oak, 4<sup>th</sup> edition, 1991. Varada Books, Pune. Pg. no. 147
2. Atharvaveda Samhita, Pandit Ramsvarup Sharma Gaud, Part 1, 1990, Chaukhamba Vidyabhavan, Varanasi. Pg. no. 781
3. Charaka Samhita, Vd. Bramhanad Tripathi, Reprint 2001, Chaukhamba Surbharati Prakashana, Varanasi Pg. no. 717
4. Bhela Samhita, Girijadayal shukla, Reprint 2005, Chaukhamba Sanskrit Prakashan.
5. Kashyapa Samhita, Pt. Hemraj Sharma, 8<sup>th</sup> edition 2002, Chaukhamba Sanskrit sansthan, Varanasi Pg. no. 65
6. Sushruta Samhita (Sushrutarth sandipan bhashya), By- Haranchandra chakravarti. Edited by- Chandrakant Bhatta Charya. Reprint (1999, Chaukhambha surbharti prakashan, Varanasi. Pg. no. 205, 383
7. Ashatang Hridaya, Acharya Atridev Gupt, Editor- Vd. Yadunanadan Upadhyay, Reprint 2011, Chaukhambha orientalia, Varanasi.
8. Sharangdhara Samhita, Vd. Bramhanad Tripathi, Reprint 2004, Chaukhambha Surabharati prakashan, Varanasi Pg. no. 31
9. Pratyaksha Shariram, Shri Gananath Sen Sharma, Reprint 1985, Krishnadas Academy, Varanasi. Pg. no. 66, 74, 75
10. Gray's Anatomy, Susan Standring, 39<sup>th</sup> edition 2006, E. Churchill living stone.
11. Human Anatomy, B.D. Chaurasia, 4<sup>th</sup> edition 2008, C.B.C. Publishers, Delhi.
12. Human Anatomy, A. Halim, 2004, C.B.C. Publishers, Delhi. Pg. no. 71
13. Textbook of Human Histology, Inderbeer Singh, 7<sup>th</sup> Edition, Jaypee Brothers Medical Publishers (P) Ltd, Delhi. Human Embryology And Developmental Biology, Bruce M. Carlson, 3<sup>rd</sup> edition, Saint Louis: Mosby. ISBN 0-323-03649-X. Pg. no. 317

---

**Corresponding Author:** Dr. Thakur Pritamsing Chandansing, Assistant Professor, Aspm's Ayurved Medical College, Hospital & Research Institute, Buldana-44300, India.  
Email Id: [Pritamsingthakur@Gmail.Com](mailto:Pritamsingthakur@Gmail.Com)

Source of support: Nil  
Conflict of interest: None  
Declared